



Aylesbury Community Board supplement agenda

Date: Tuesday 5 March 2024

Time: 6.00 pm

Venue: The Diamond Room, Buckinghamshire Council, Gatehouse Road, Aylesbury
HP19 8FF

Item No	Item	Time	Page No
8	An introduction to the National Paralympic Heritage Trust An introduction to the National Paralympic Heritage Trust To be presented by Vicky Hope-Walker, CEO NPHT	18:40	3 - 14
10	Community Matters Slide pack for Community Board Meeting	19:30	15 - 36

This page is intentionally left blank



NPHT

NATIONAL PARALYMPIC
HERITAGE TRUST



Aylesbury Community Board Meeting March 2024

*Challenging negative attitudes
towards disability and breaking
down barriers through sharing
our collections.*



NPHT

NATIONAL PARALYMPIC
HERITAGE TRUST



Aylesbury Community Board Meeting March 2024

*Challenging negative attitudes
towards disability and breaking
down barriers through sharing
our collections.*



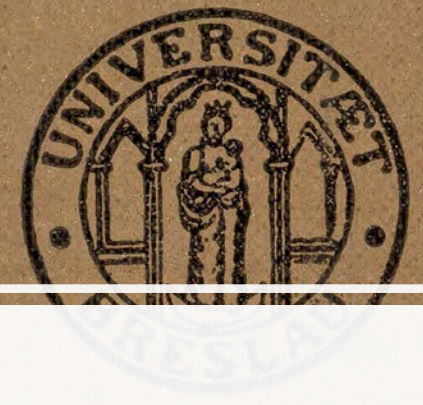
weis karte

Inhaber dieser Karte

Privatdozent

Dr. Ludwig G u t t m a n n

ist Angehöriger der
Universität Breslau
und hat Zutritt zu allen
Universitäts-Gebäuden



Eigenhändige Unterschrift des Inhabers

Dr Guttman – A refugee

About the Trust

Formed in 2015 to research, preserve and share British Paralympic Heritage, including the international collections relating to the early Games 1948 to 1989.

Charity number: 1165416

Company number: 9765432

Chair: Nigel Purse

Honorary President: Sir Philip Craven
40% of our staff and volunteers are disabled or neurodivergent.

Our work is routed in the local community.



Our first operational 6 years 2017-2023

In our first 6 years 2017 to 2023 we

- Reached nearly 600,000 people/audiences
- Created a permanent small museum at Stoke Mandeville Stadium and displays at the Spinal Centre
- Build a website/museum where 54% of audiences are from 195 nations
- Developed an inclusive learning programme
- Held 6 exhibitions across the UK
- Won an award for our MTP online programme
- Became a Nationally Styled Accredited Museum
- Developed a PhD

Page 7

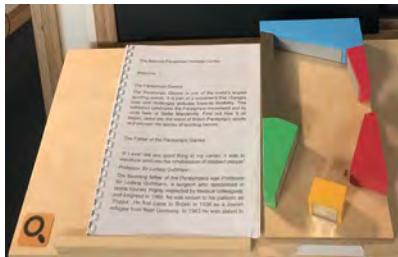


Becoming Seamlessly Inclusive 2023-2028

**Total Budget £2.1m and
Total Target Audiences 1,000,000**

In our role as caretakers of the World's most important disability history collection, the Paralympic movement, we aim to become, and help others become seamlessly inclusive.

Page 8



The Vision 2023-2028

Central to work are three interacting themes that will be delivered both physically and virtually, through local, national, international, regional, and academic partnerships

Collections

of worldwide importance

Sustainability

securing the future

Seamlessly Inclusive

Leaders in D/deaf & disability heritage access

Engagement

Learning: innovation & work opportunity

Exhibitions: national and international



**The Programme:
Collections** – *the treasure
at the heart of all great
museums. By 2028 there
will be -*

- access to key collections relating to all Paralympic sports.
- Digitisation of unique early collections
- 50 new oral histories.
- Further Academic study programmes

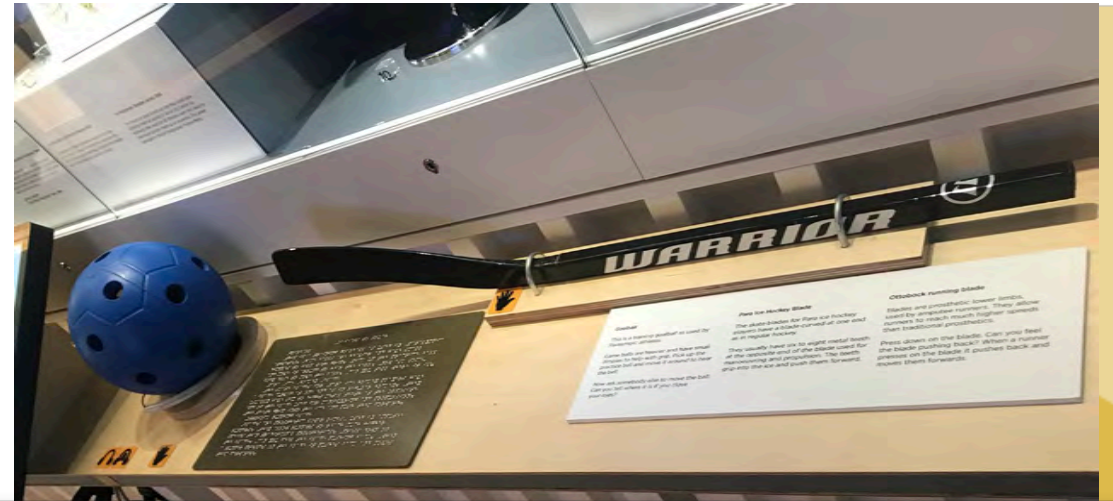


The Programme: Engagement –
Perpetuating personal growth and understanding through learning and partnerships. By 2028 there will be –

- *Learning broadened to take in all disability sports*
- *Local museum partnerships*
- *Local SEND school partnerships*
- *Local disability group partnerships to shape our work and build work placement, employment and volunteering opportunities for disabled people. (Power to the People framework)*



The Programme: Exhibitions – *The sharing of stories that changes lives for disabled people, and the attitude of others. By 2028 there will be a virtual Paralympic Museum with 10 rooms co-created by disabled trainees and pupils from SEND schools*



Page 12

- Celebrating Dr Guttman the father of the Paralympic Movement
- Celebrating disability and disability sport across Buckinghamshire
- Recording the histories of all the disability sports organisations
- With accompanying learning materials



The Programme: Sustainability –
*Being fit for purpose financially,
through human resourcing &
infrastructure enabling a dynamic
business model that can respond to
new opportunities.*



Capturing the Spirit and making it happen: Contacts:

Vicky Hope-Walker – CEO

Vicky.hopewalker@paralympicheritage.org.uk

Page 14





Aylesbury Community Board Meeting

5th March 2024

Please help yourself to water and take a seat of your choice





Community Board
Aylesbury

Page 16

18:00 Welcome
18:10 TVP update
18.25 Charities Together
18:40 NPHT
18:55 Community Board
update
19:30 Community Matters
19:55 Thank you and Close



Welcome from the Community Board
Chairman - Cllr Mark Winn



Community Board
Aylesbury

Item 6: TVP update

Update & question time

Page 17

Sgt Clare Farrow, Thames Valley Police



Community Board
Aylesbury

Item 7: Charities Together

Presentation and questions delivered by:

Mark Russell, CEO AgeUK

Page 18



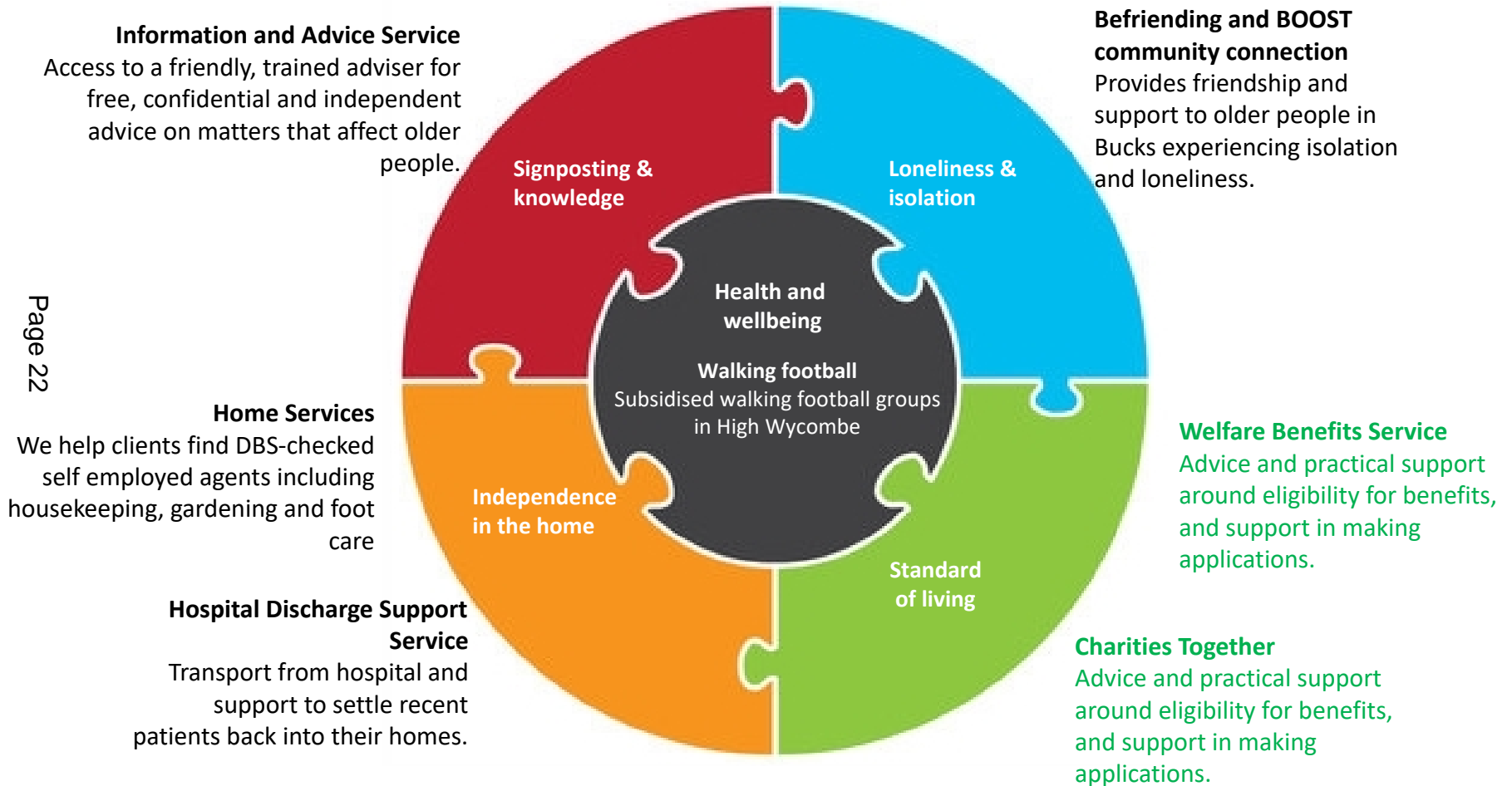
Challenges - The bigger picture

- **The shadow of Covid – older people not bouncing back**
- **Health deconditioning**
- **Lower social confidence and difficulty re-engaging**
- **Loneliness**
- **Cost of living reducing quality of life**
- **No continuity of care**
- **Inequalities – rural and urban**

Everyday challenges

- More complex needs
- Money worries
- Access to transport
- Digital exclusion
- Low level advocacy
- Access to key services
- Accessibility and ease of forms and process
- Sitting services
- Dementia services
- Loneliness and isolation especially post covid

Directly supporting c.4,000 older people in Bucks a year through:



Collaboration

- Walking Football (Wycombe Wanderers Foundation)
- Listen Learn Adapt research (4 charities)
- Charities Together (Aylesbury Pilot – 10 Charities)
- Age Friendly Bucks programme (with Public Health)

Welfare Benefits Service

- Coordinated from our office in Aylesbury
- This service works closely with our Information & Advice Team – we can answer queries regarding benefits and refer for further support if needed.
- Delivered by a group of skilled, trained volunteers who visit older people at home to support them to complete benefit claim forms such as:
 - ✓ Attendance Allowance
 - ✓ Personal Independence Payment
 - ✓ Pension Credit
 - ✓ Carers Allowance
- We work closely with the Department of Work and Pensions and have 'Alternative office' status.

Welfare Benefits Service: Your grant of £15,000

- Enabled an expansion of the service at a crucial time in the cost of living crisis
- An additional coordinator role enabling us to recruit more volunteers to do more home visit applications and support more people remotely

HEADLINES yoy (WIP draft) – whole service

- Volunteers from 15 to 23
- Appointments (in home) up 20%+
- Annualised Benefits up c.25%

Case study - Benefits advice and signposting

- Bea rang our I&A service seeking help. She is 84 years old and told us she has Parkinsons and is diabetic, asthmatic and has sarcoidosis. Her husband passed away 19 years ago and she lives alone. Her son suffers from mental health issues and lives in sheltered support accommodation. Bea's conditions affect her balance, and she had fallen several times and not been able to get herself up. Understandably, Bea was frightened of showering and night-time can be very disturbed due to Parkinsons and frequent visits to the toilet.

Page 26

- Bea had never asked for help before, and doesn't claim any other benefits. She said her savings were getting low and she was worried about how to cope.

- We agreed that there was eligibility for Attendance Allowance, and we arranged for Shirley, our Welfare Benefits volunteer, to visit her at home to complete an application. This was successful at the higher rate (£102 a week) and also was back dated, totalling an additional c. £1,000.

- We followed up with Bea and suggested she look into Personnal Assistant support. She told us Shirley was fantastic, and that her allowance was already making a real difference to her everyday life - for example she could now afford weekly deliveries of food from Oakhouse as she found meal-making difficult.

Charities Together

- Bucks Capacity Fund aimed at supporting those most affected by the cost of living crisis and 'falling through the gaps' of support
- Those struggling with food costs, housing costs or fuel/heating costs in Opp Bucks towns
- A unique collaboration of six local charities bringing resources and experience to bear on Aylesbury (pilot phase)
 - Age UK Bucks
 - Connection Support
 - Citizens Advice Bucks
 - Carers Bucks
 - Community Impact Bucks
 - Youth Concern
- Working with 4 local 'grass roots' charities:
 - Southcourt Baptist Church
 - Multicultural Centre
 - The Vineyard/Hub
 - Youth Concern
- April 2023 launch, with 2 x Community Development Workers in place from Sept 2023 (one year funding), one supervised by Age UK Bucks
- Reporting to funders quarterly

Charities Together: Learning and outcomes

- It's a tough environment for local charities (all our grassroots partners are struggling with income over the period, and higher demand for services)
- Collaboration takes time, considerable effort and trust
- CDW role is essential connector between grassroots orgs, clients and collaboration
- Need for CDWs to build trust of Grass Roots clients (warm introduction not enough)
- Case work is much more complex than anticipated – especially underlying issues of mental health and debt/housing which need underpinning before other issues can be supported
- CDW casework therefore more complex and longer term
- C. 23 cases supported currently – all Aylesbury based



Community Board
Aylesbury

Item 8: National Paralympic Heritage Trust

Presentation and questions delivered by:

Vicky Hope-Walker, CEO NPHT



Support residents to come together and increase community spirit within their local neighbourhood through the delivery of community-based initiatives

- Funding agreed for Prebendal Farm SA
- Student led Christmas event
- Introduction to Kalinga Filipino Organisation
- Supporting projects to bring the community together
- Supporting, problem solving & feeding back to other services



Provide opportunities for residents to develop new skills

- Games Club idea development with Dave & Co
- Working with AYA interns

Develop a volunteering strategy for Aylesbury

- Partnership meetings and conversations
- Working with CIB & VCSE Partnership Board to develop ideas

Support exploration around the physical and environmental impacts of vaping

- Working with ATC & Bucks Council services to take forward idea



Influence behavioural change to improve road safety around our schools

- Aylesbury East and South-East school road safety campaign

Supporting Opportunity Bucks priorities identified by Ward Partnerships in Aylesbury North, North-West and South-West

- Working with Op Bucks Team
- Supporting Ward Partnerships- NW meeting
- Supporting Economic Regeneration Team
- Public Health Bike Libraries

Item 9: Engagement



Page 33





Item 9: Funding Update

Budget: £196,770

Allocated: £43,298

- £1,193** Grow it, Cook it, Eat It
- £740** Prebendal Farm Street Association
- £742** Road Safety Poster project
- £750** Dementia Christmas Event
- £15,000** Bedgrove Pump Track
- £1,994 Only Me
- £15,000 Queens Park Community Project
- £1,000 Ardenham Lane Allotments- Wildlife Garden
- £2,000 Coldharbour Community Garden
- £2,888 Go Play Hot Lunches
- £991 Coldharbour Community Essentials
- £1,000 75th Windrush Anniversary



Item 10: Community Matters

Questions received in advance to the Community Board

Buckinghamshire Council Update- in agenda pack

Page 35

Opportunity Bucks Update



Thank you!

Keep in touch via:

Aylesburycb@buckinghamshire.gov.uk

[@Aylesburycommunityboard](#) on Facebook

